

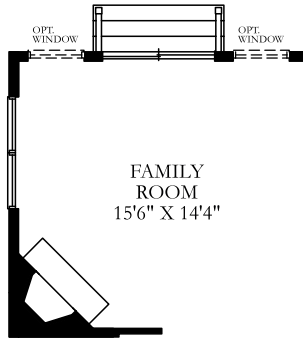
The Charleston



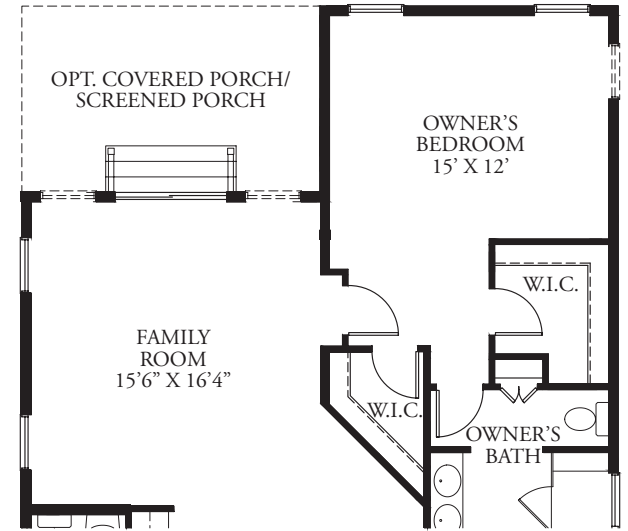
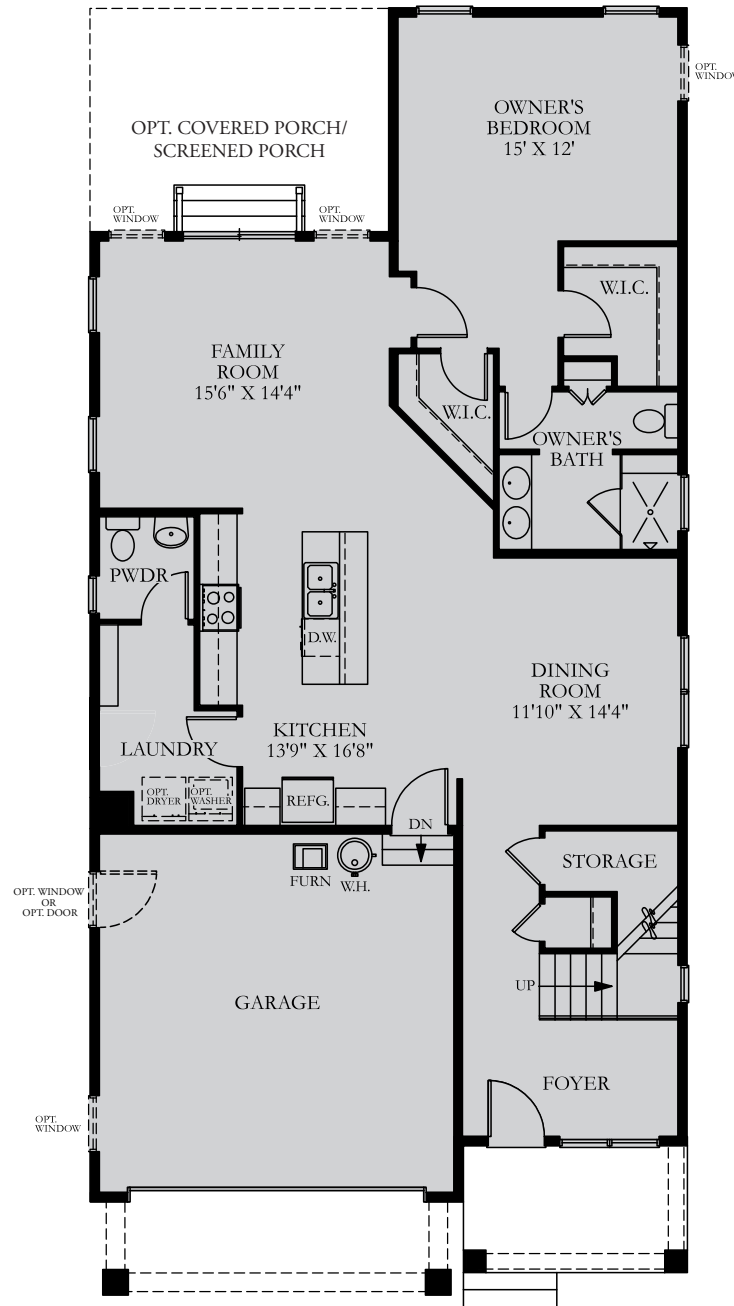
The Charleston

The **Charleston** has no shortage of curb appeal featuring front porches on two levels and architectural details with southern charm. Offering up to four bedrooms and four baths, these homes, starting at 2,609 square feet, feature a first-floor owner's suite for main level living, a sunny loft, screened porch, extended living, and a private side entrance with an optional full bathroom and mud room perfect after a fun day at the beach. No matter what you are looking for, the **Charleston** provides superior quality, detail and charm that is certain to exceed your expectations.

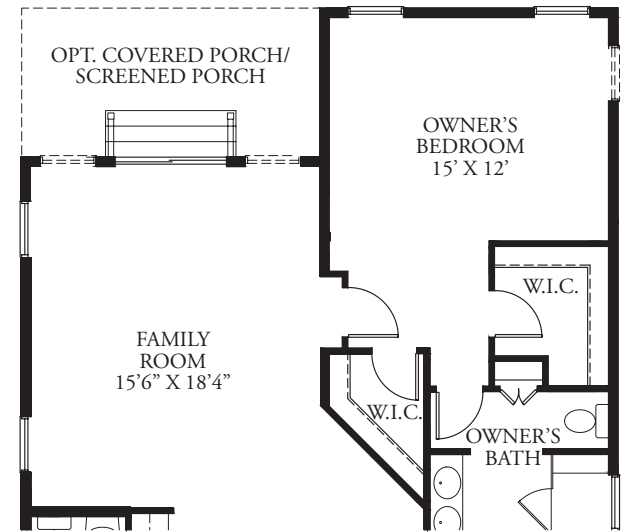
BRYTON HOMES
A Georgelas Company



FIRST FLOOR PLAN
W/ OPT. FIREPLACE

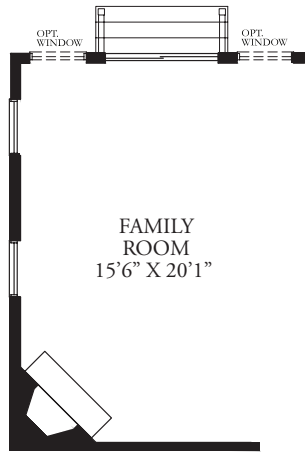


FIRST FLOOR PLAN W/
OPT. 2' REAR EXTENSION

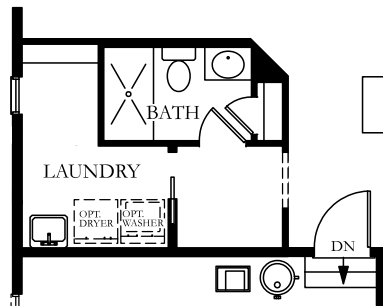


FIRST FLOOR PLAN W/
OPT. 4' REAR EXTENSION

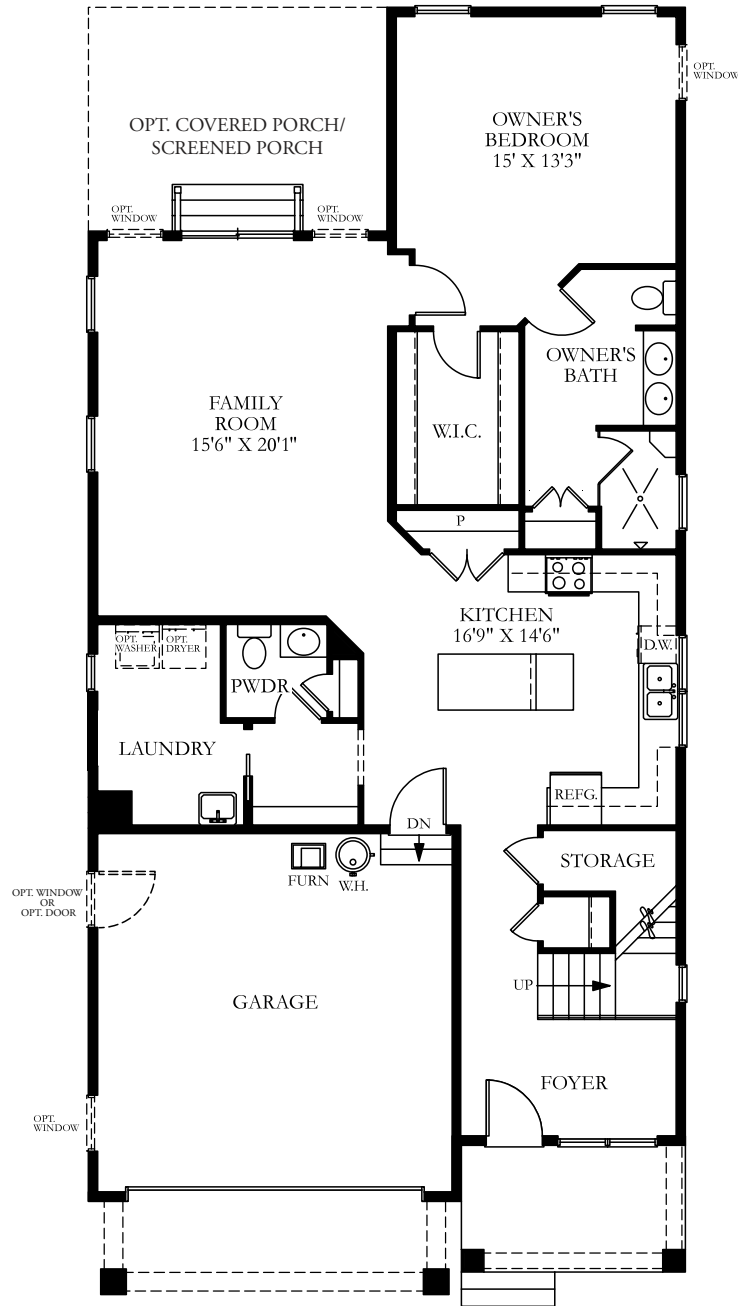
* 2' AND 4' EXTENSIONS ARE ALSO AVAILABLE ON ALT. FIRST FLOOR PLAN



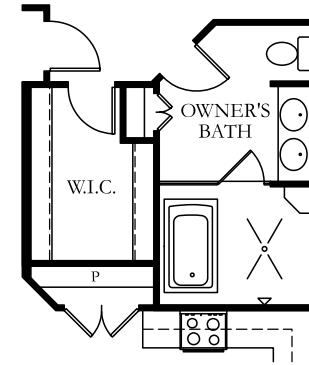
ALT. FIRST FLOOR PLAN
W/ OPT. FIREPLACE



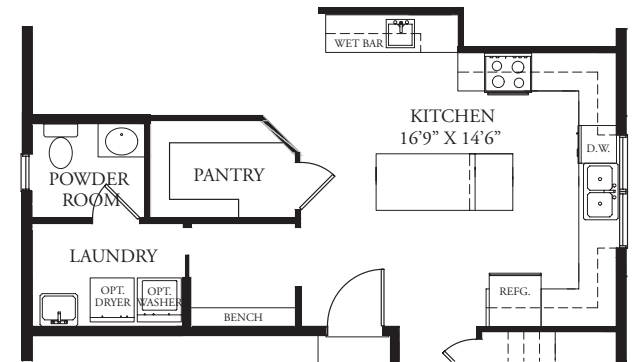
ALT. FIRST FLOOR
AND OPT. BATH



OPT. ALT. FIRST FLOOR

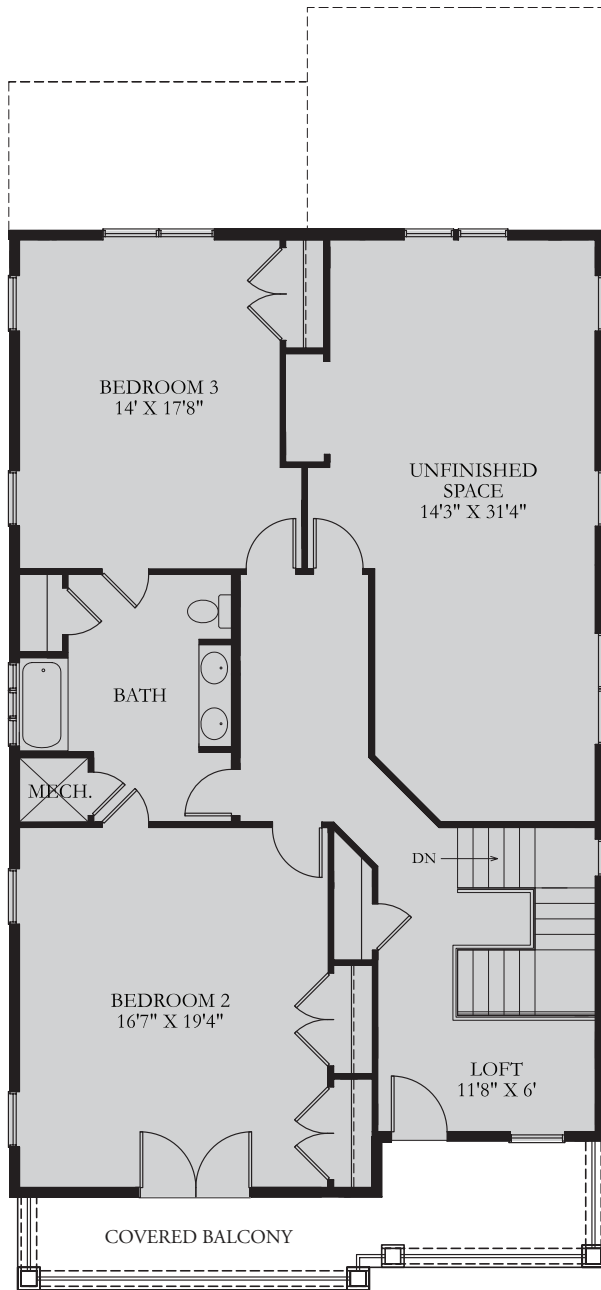


ALT. FIRST FLOOR
AND OPT. OWNER'S BATH

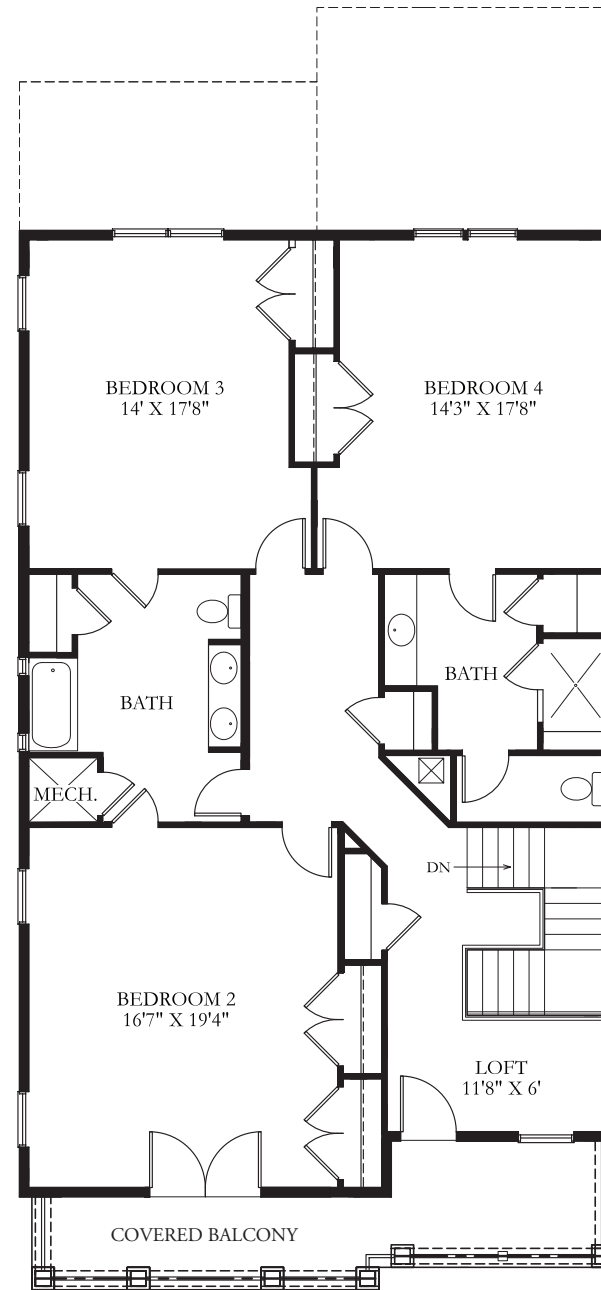


ALT. FIRST FLOOR PLAN W/
ALT. PANTRY, PWDR RM., WET BAR

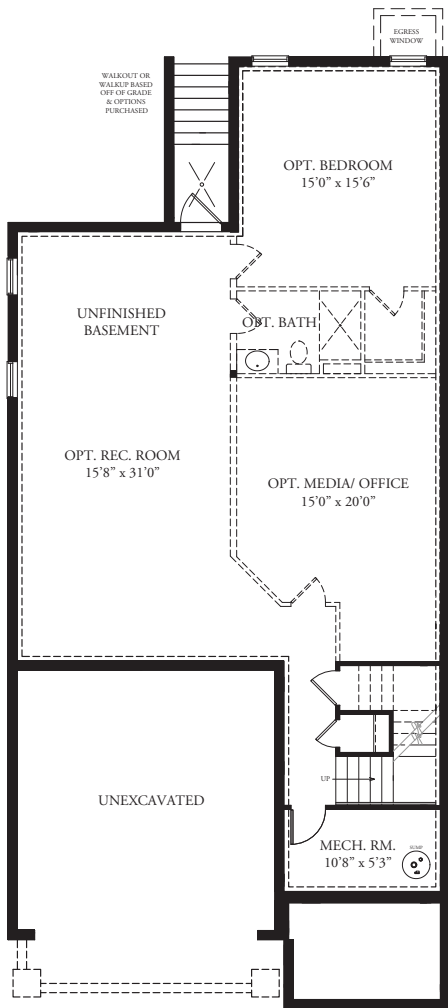
* 2' AND 4' EXTENSIONS ARE ALSO AVAILABLE ON ALT. FIRST FLOOR PLAN



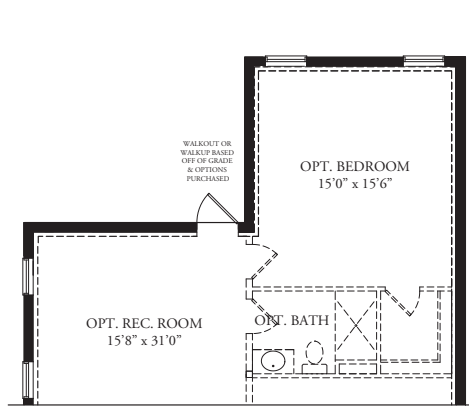
SECOND FLOOR PLAN



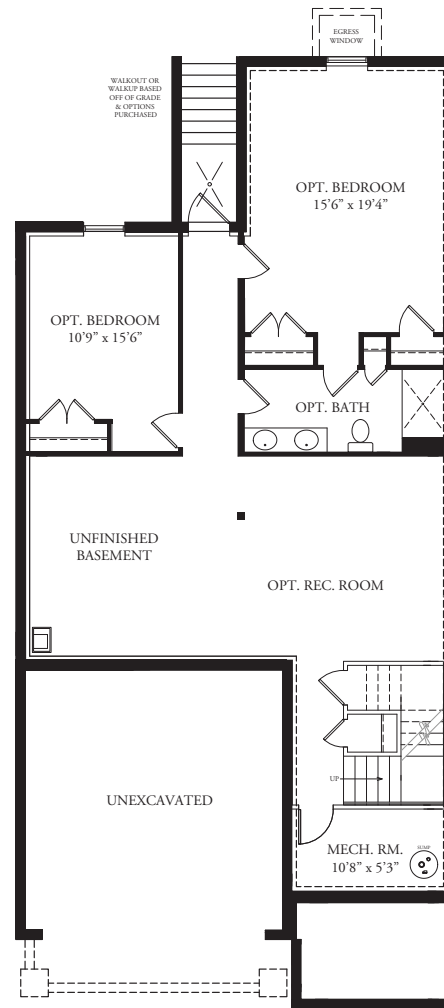
SECOND FLOOR PLAN
W/ OPT. ALT. SECOND FLOOR



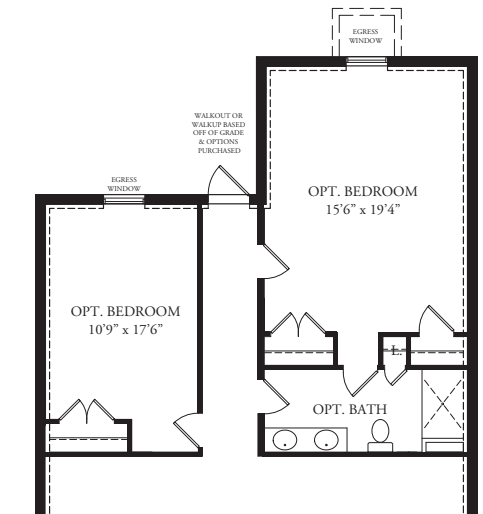
BASEMENT PLAN OPTION WITH WALK UP



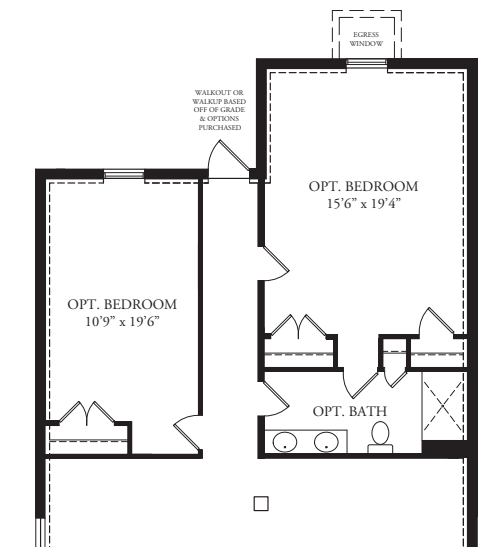
PARTIAL BASEMENT PLAN OPTION WITH WALKOUT



ALTERNATE BASEMENT PLAN OPTION



BASEMENT PLAN OPTION @ 2' EXTENSION



BASEMENT PLAN OPTION @ 4' EXTENSION

The Charleston



BRYTON HOMES
A Georgelas Company