

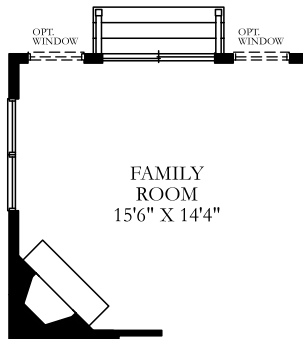
# The Southport



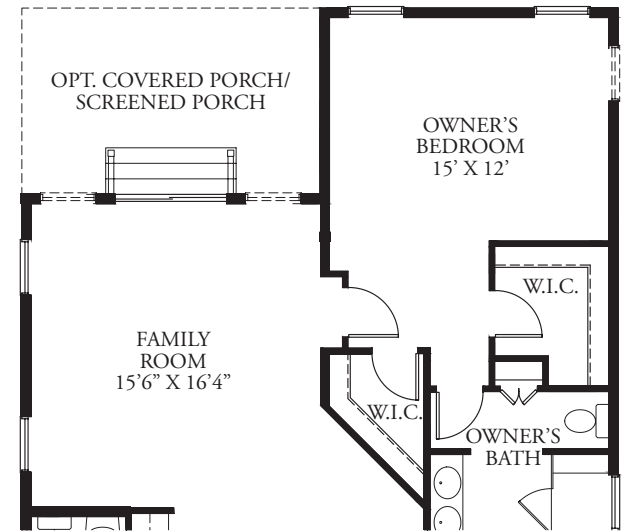
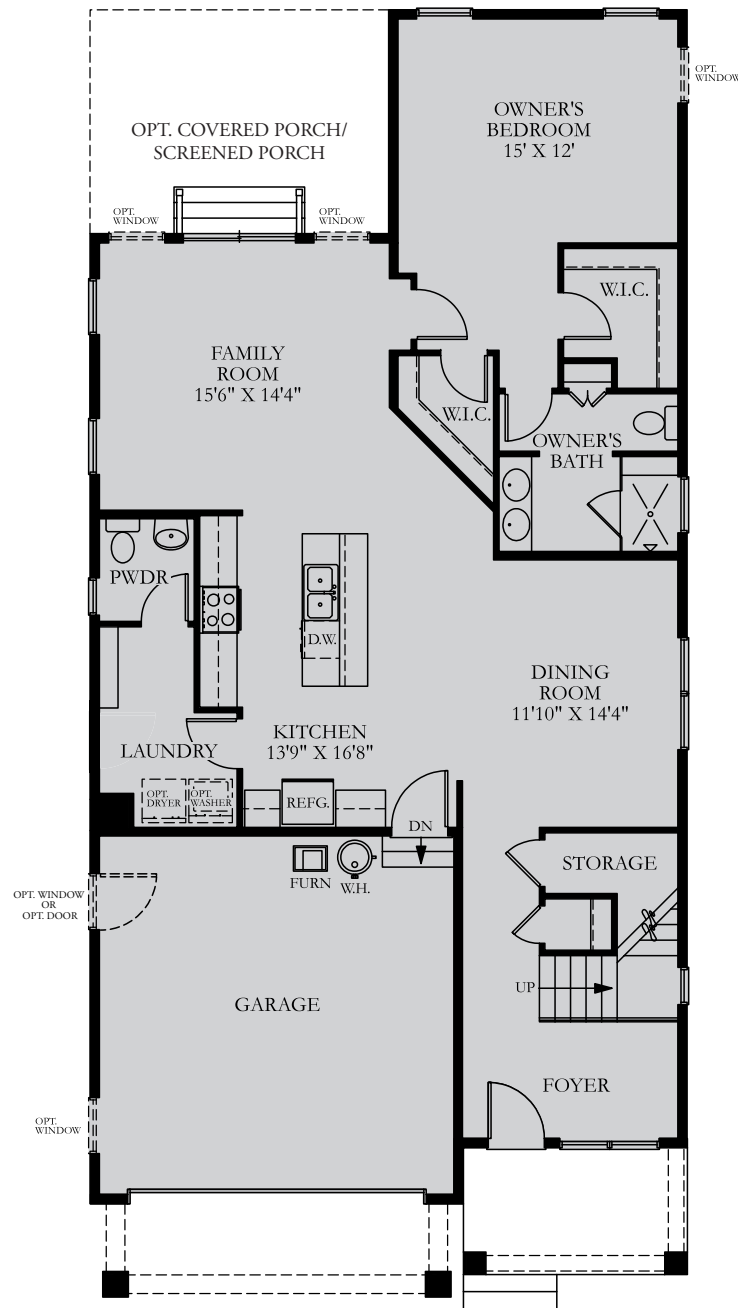
## The Southport

Starting at 2,609 square feet, the **Southport** offers a light filled open concept floor plan with main level living. This exceptionally designed home offers up to four bedrooms and four baths along with customization to complement your lifestyle; an optional oversized kitchen island, front porch, walk-in pantry, mudroom, and wet bar. The seamless transition of living space from the kitchen, dining room and great room is ideal for relaxing on your own or gathering with friends and family.

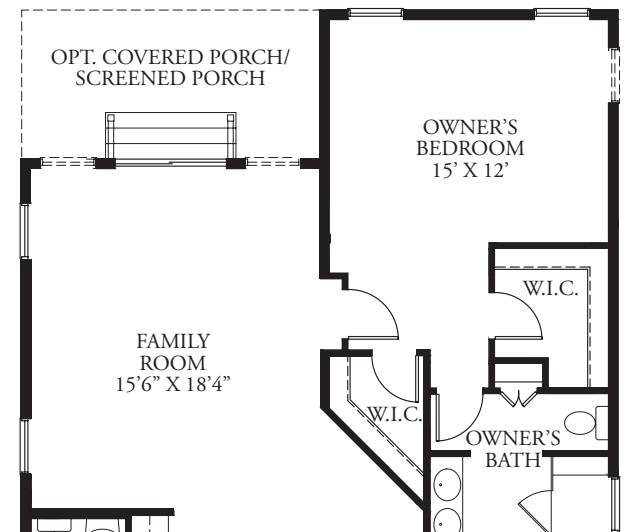
**BRYTON HOMES**  
*A Georgelas Company*



FIRST FLOOR PLAN  
W/ OPT. FIREPLACE

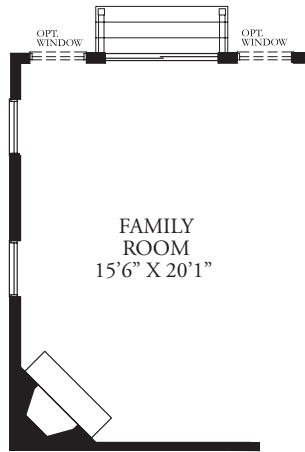


FIRST FLOOR PLAN W/  
OPT. 2' REAR EXTENSION

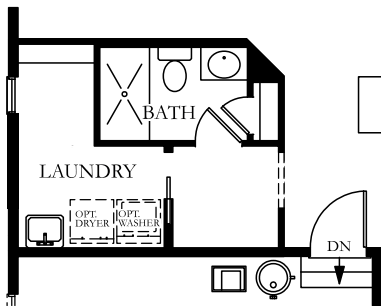


FIRST FLOOR PLAN W/  
OPT. 4' REAR EXTENSION

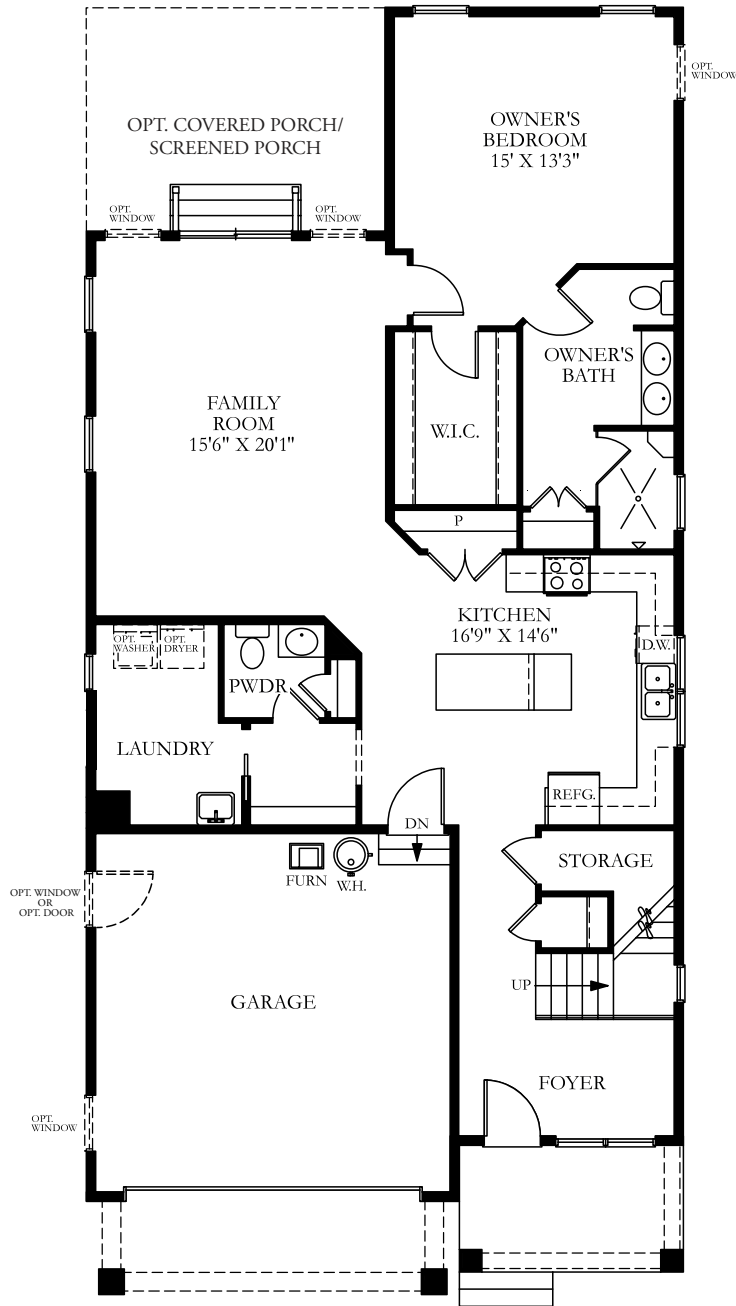
\* 2' AND 4' EXTENSIONS ARE ALSO AVAILABLE ON ALT. FIRST FLOOR PLAN



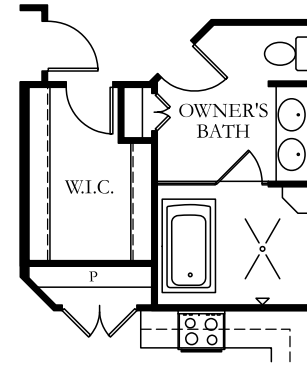
ALT. FIRST FLOOR PLAN  
W/ OPT. FIREPLACE



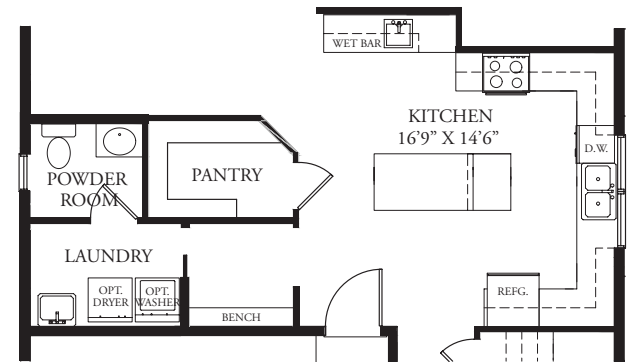
ALT. FIRST FLOOR  
AND OPT. BATH



OPT. ALT. FIRST FLOOR

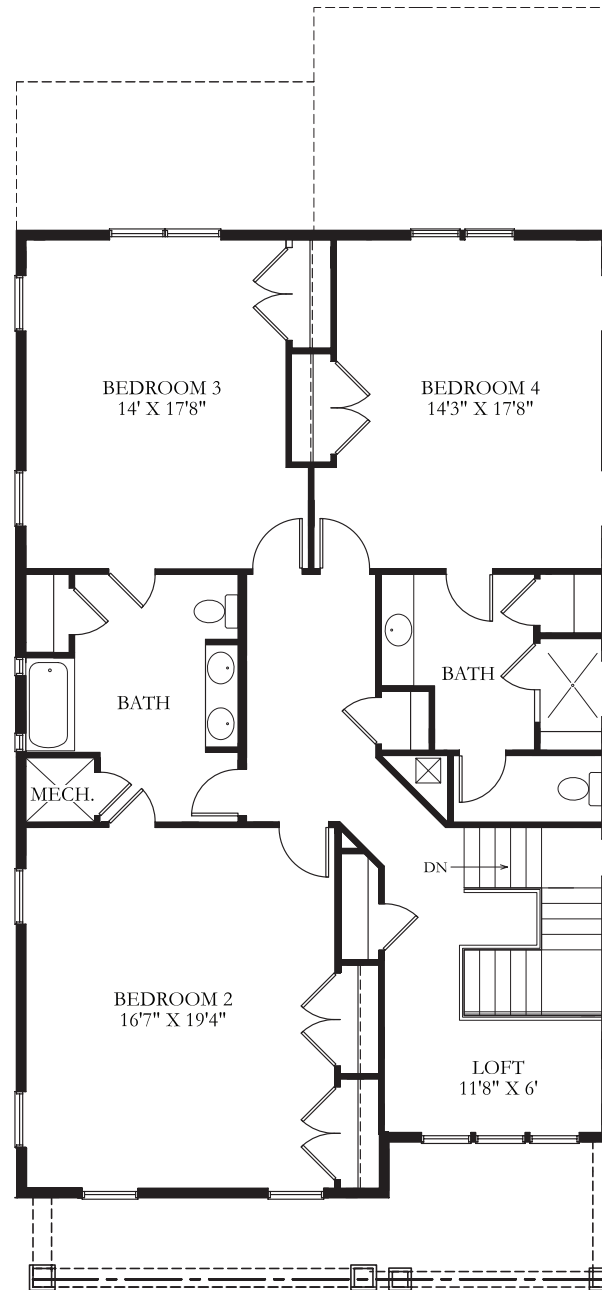
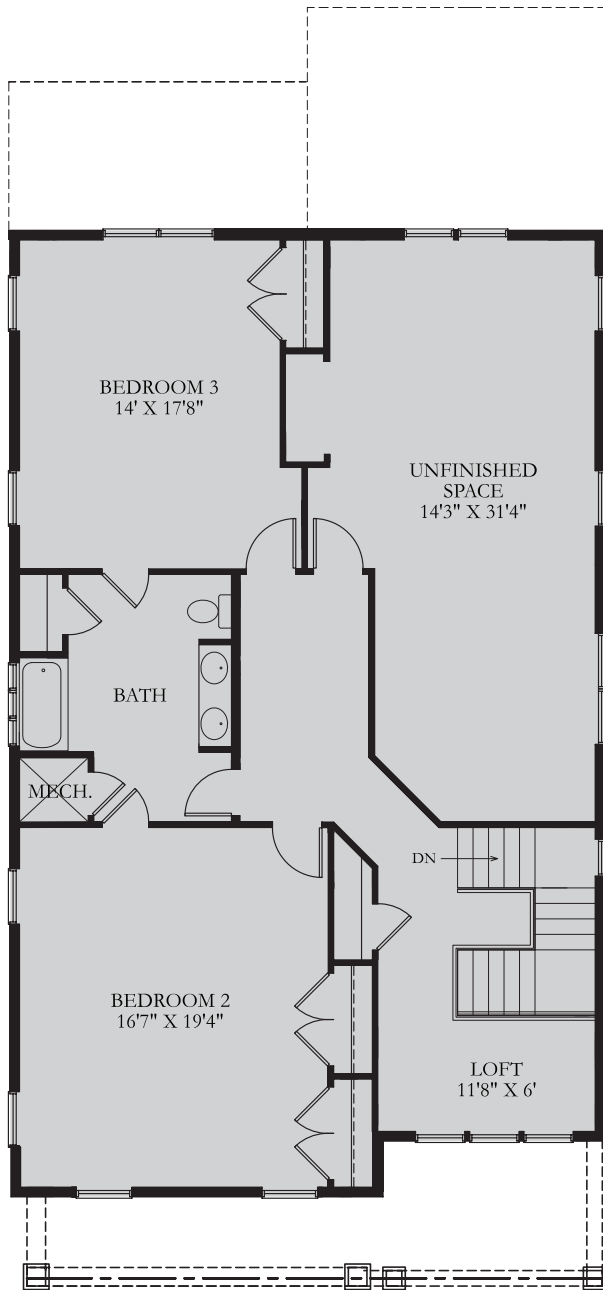


ALT. FIRST FLOOR  
AND OPT. OWNER'S BATH

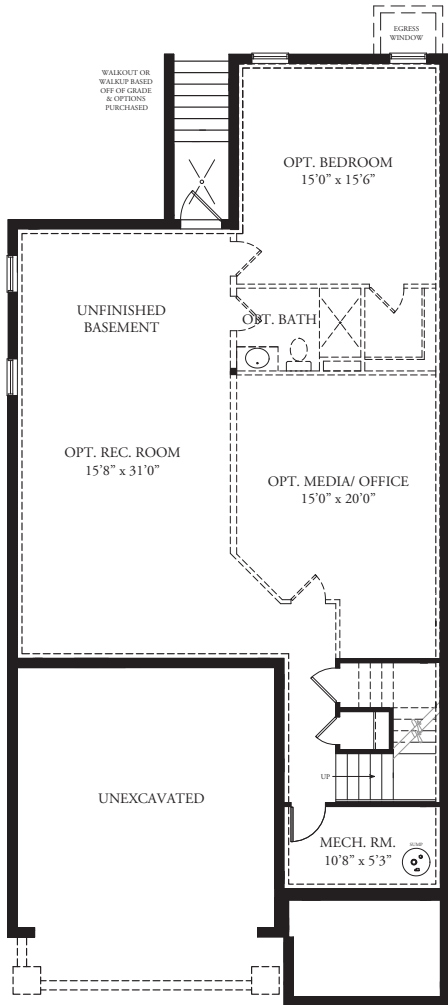


ALT. FIRST FLOOR PLAN W/  
ALT. PANTRY, PWDR RM., WET BAR

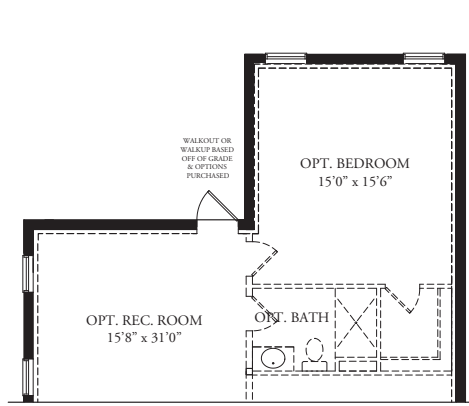
\* 2' AND 4' EXTENSIONS ARE ALSO AVAILABLE ON ALT. FIRST FLOOR PLAN



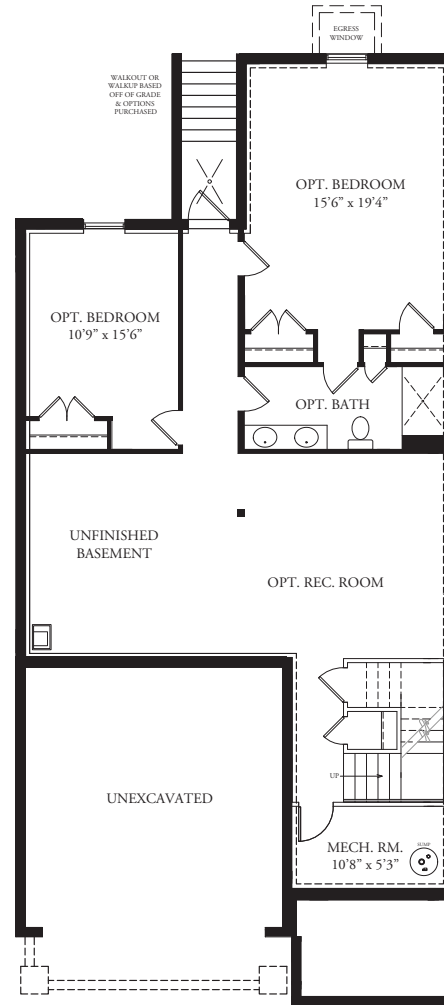
SECOND FLOOR PLAN  
 W/ OPT. ALT. SECOND FLOOR



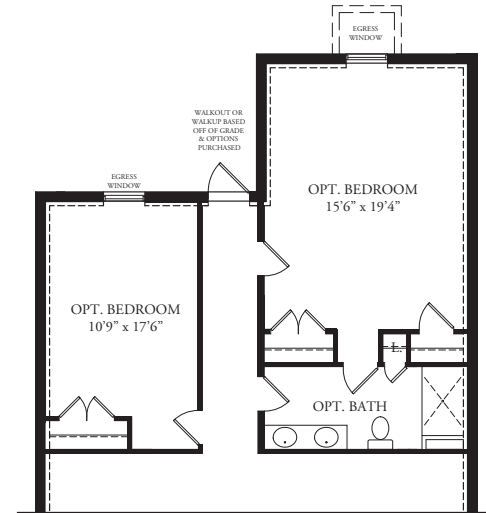
BASEMENT PLAN OPTION WITH WALK UP



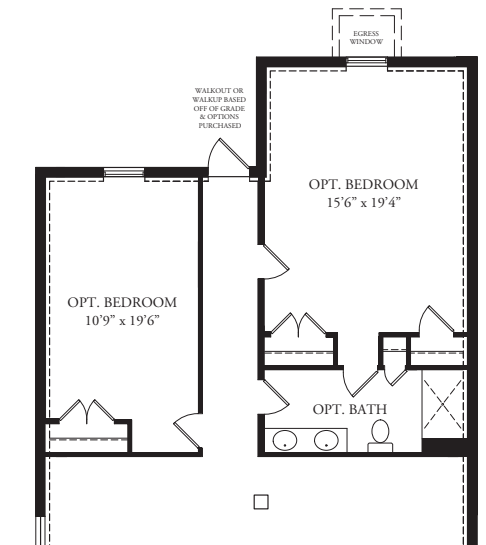
PARTIAL BASEMENT PLAN OPTION WITH WALKOUT



ALTERNATE BASEMENT PLAN OPTION



BASEMENT PLAN OPTION @ 2' EXTENSION



BASEMENT PLAN OPTION @ 4' EXTENSION



# The Southport



**BRYTON HOMES**  
*A Georgelas Company*