

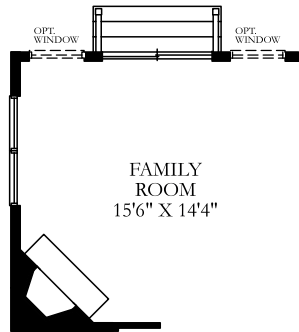
# The Wilmington



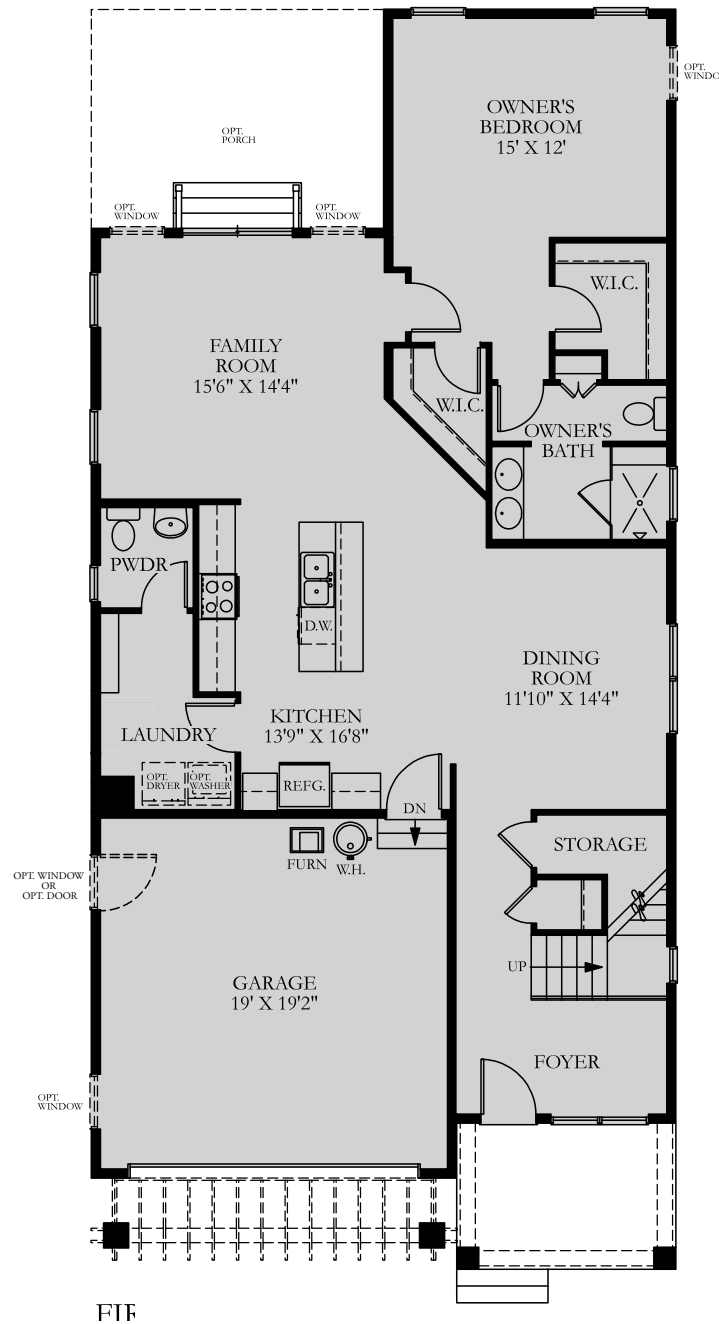
**The Wilmington**

The **Wilmington's** superior craftsmanship, attention to detail and included features are evident throughout. This beautiful home, starting at 2,486 square feet, offers three bedrooms and up to three bathrooms with seemingly limitless opportunities to customize from extended living space, a screened porch and multiple kitchen layouts, among many other options. Enjoy an expansive open concept with a first-floor owner's suite, a luxury owner's bath with a double bowl vanity and walk-in tiled shower. Family and guests will be able to enjoy the spacious upstairs bedrooms and bathroom with comfort and privacy.

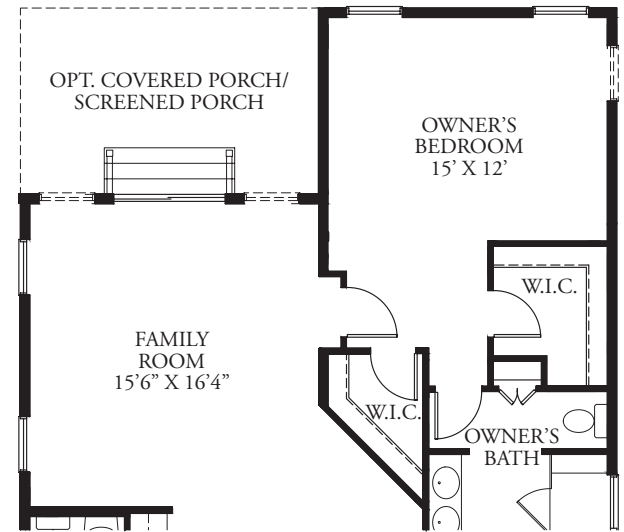
**BRYTON HOMES**  
*A Georgelas Company*



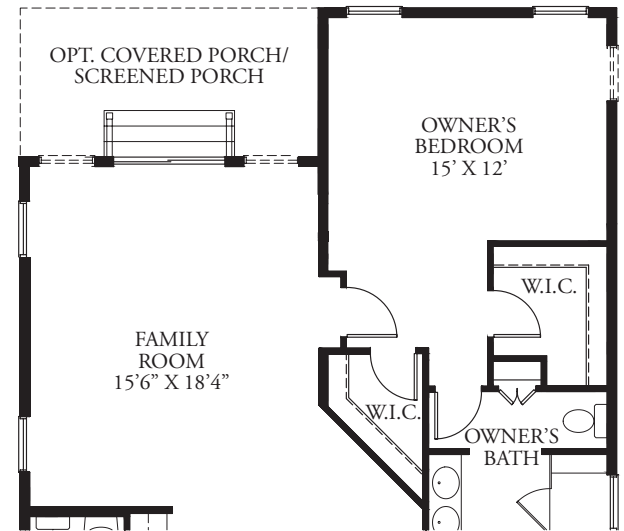
PARTIAL FIRST FLOOR PLAN  
W/ OPT. FIREPLACE



F1F

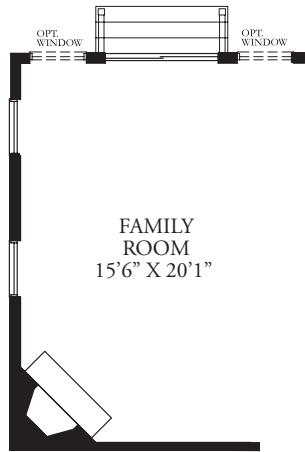


FIRST FLOOR PLAN W/  
OPT. 2' REAR EXTENSION

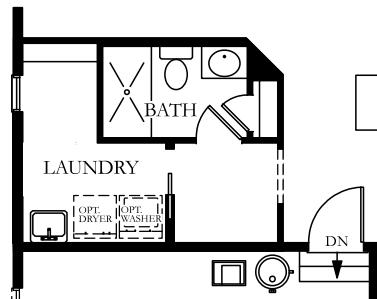


FIRST FLOOR PLAN W/  
OPT. 4' REAR EXTENSION

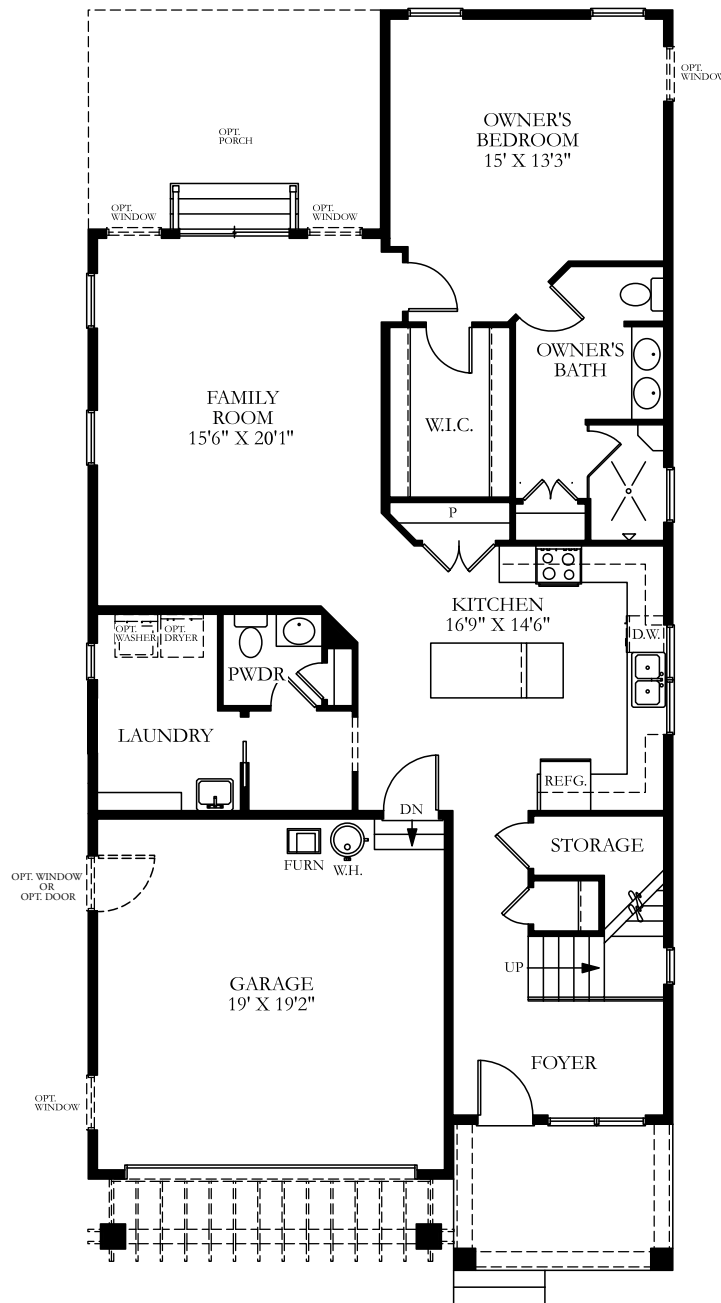
\* 2' AND 4' EXTENSIONS ARE ALSO AVAILABLE ON ALT. FIRST FLOOR PLAN



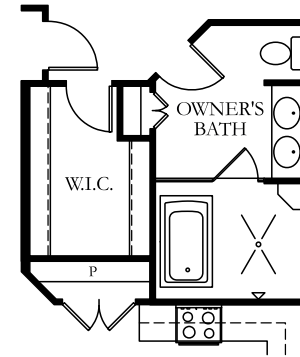
ALT. FIRST FLOOR PLAN  
W/ OPT. FIREPLACE



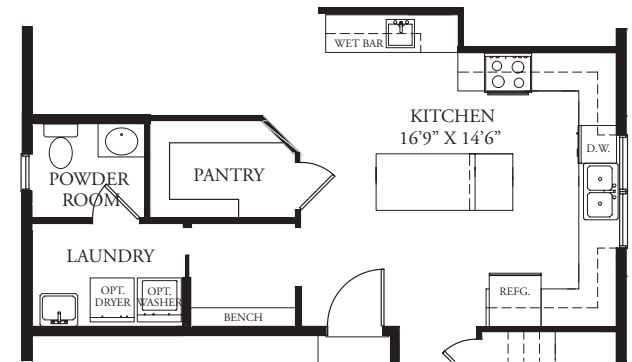
ALT. FIRST FLOOR  
AND OPT. BATH



PARTIAL FIRST FLOOR PLAN  
W/ OPT. ALT. FIRST FLOOR

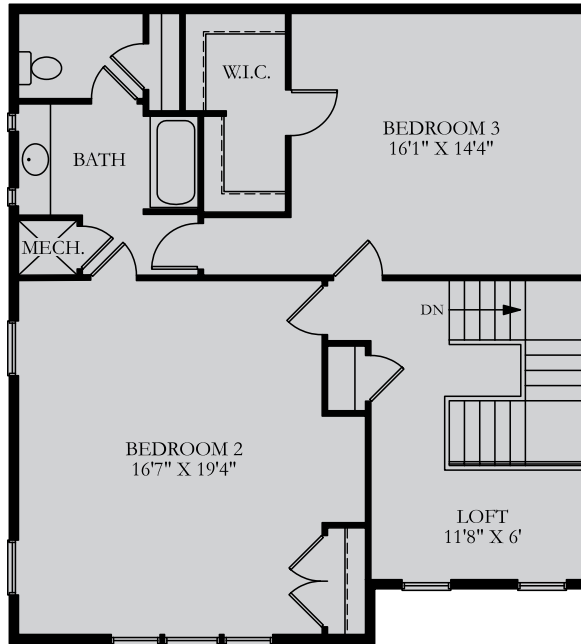


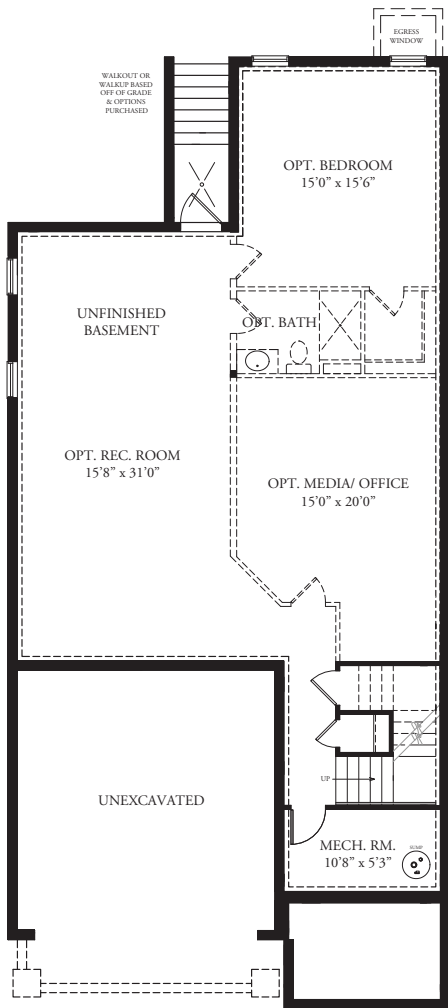
ALT. FIRST FLOOR  
AND OPT. OWNER'S BATH



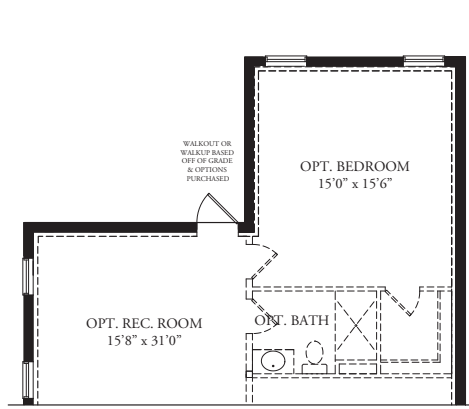
ALT. FIRST FLOOR PLAN W/  
ALT. PANTRY, PWDR RM., WET BAR

\* 2' AND 4' EXTENSIONS ARE ALSO AVAILABLE ON ALT. FIRST FLOOR PLAN

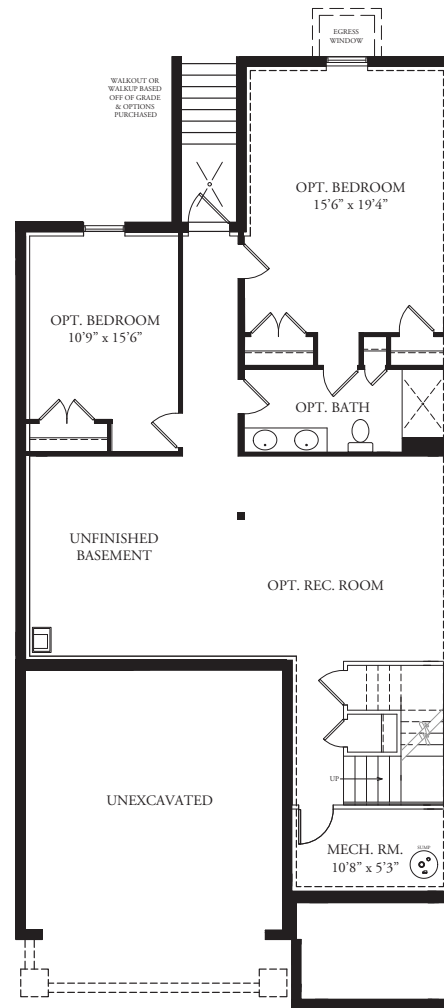




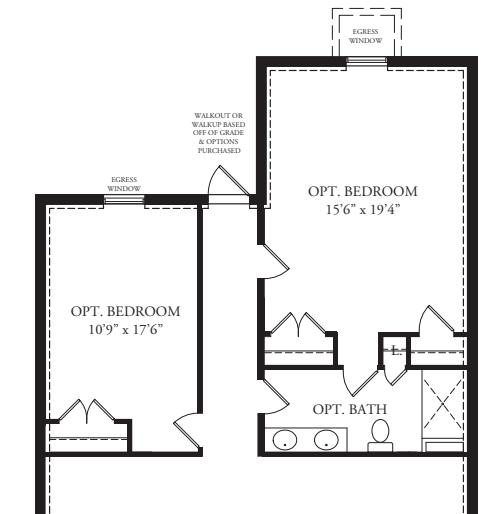
BASEMENT PLAN OPTION WITH WALK UP



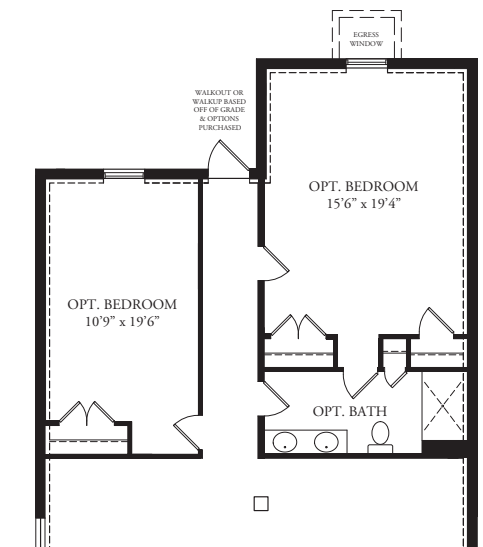
PARTIAL BASEMENT PLAN OPTION WITH WALKOUT



ALTERNATE BASEMENT PLAN OPTION



BASEMENT PLAN OPTION @ 2' EXTENSION



BASEMENT PLAN OPTION @ 4' EXTENSION

# The Wilmington



**BRYTON HOMES**  
*A Georgelas Company*