

# The Providence



The Providence A



The Providence B

[www.brytonhomes.com](http://www.brytonhomes.com)

# The Providence



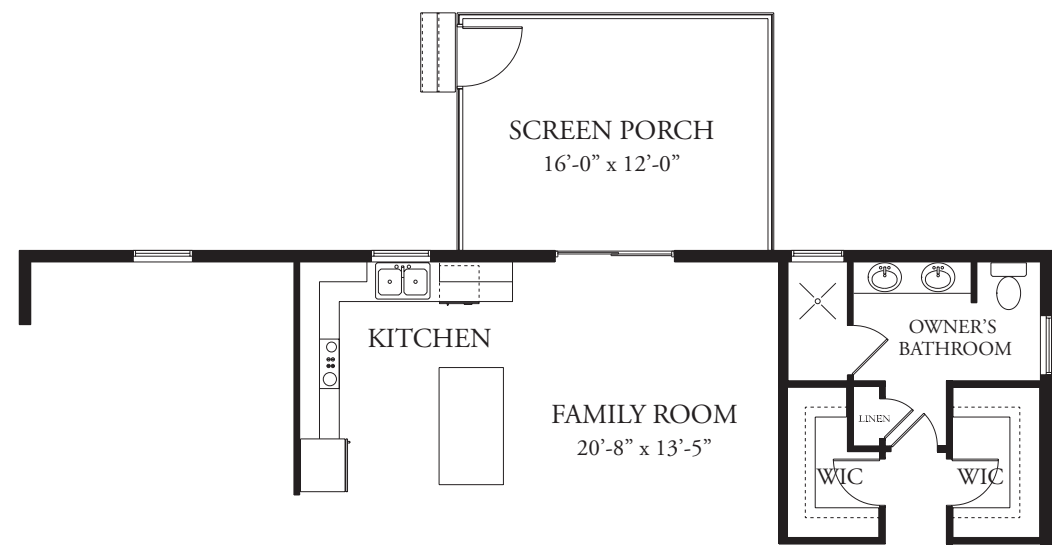
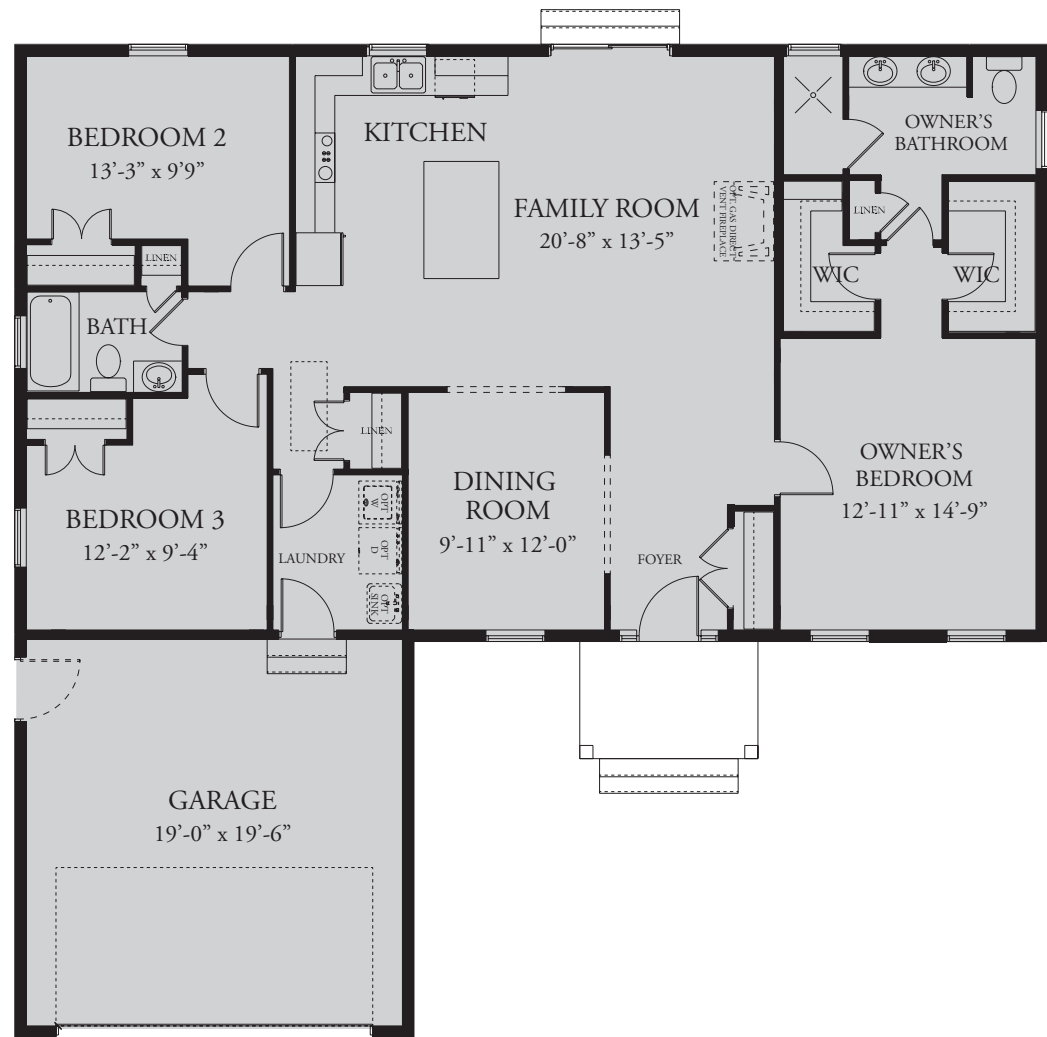
The Providence B

3 Bedrooms  
2 Bathrooms  
Starting at 1,560 Sq Ft

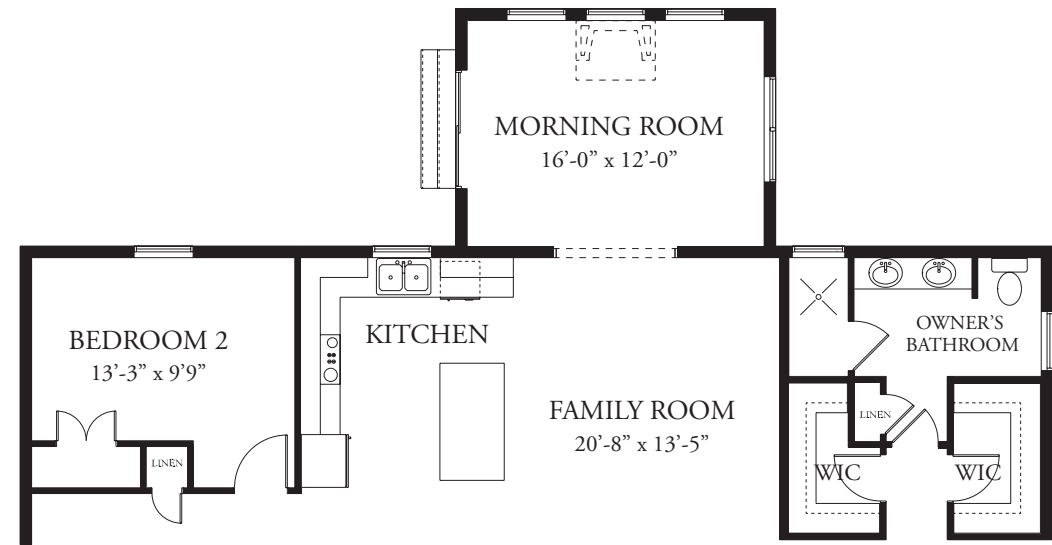
**BRYTON HOMES**  
*A Georgelas Company*



\*This brochure is for illustrative purposes only. Dimensions and features are subject to change without notice or obligations. Features may also be altered to keep pace with the builder's ongoing design improvement program. This brochure is made available for the purpose of illustration and is not part of a legal contract. Price subject to change without notice.



OPT. SCREENED PORCH



OPT. MORNING ROOM